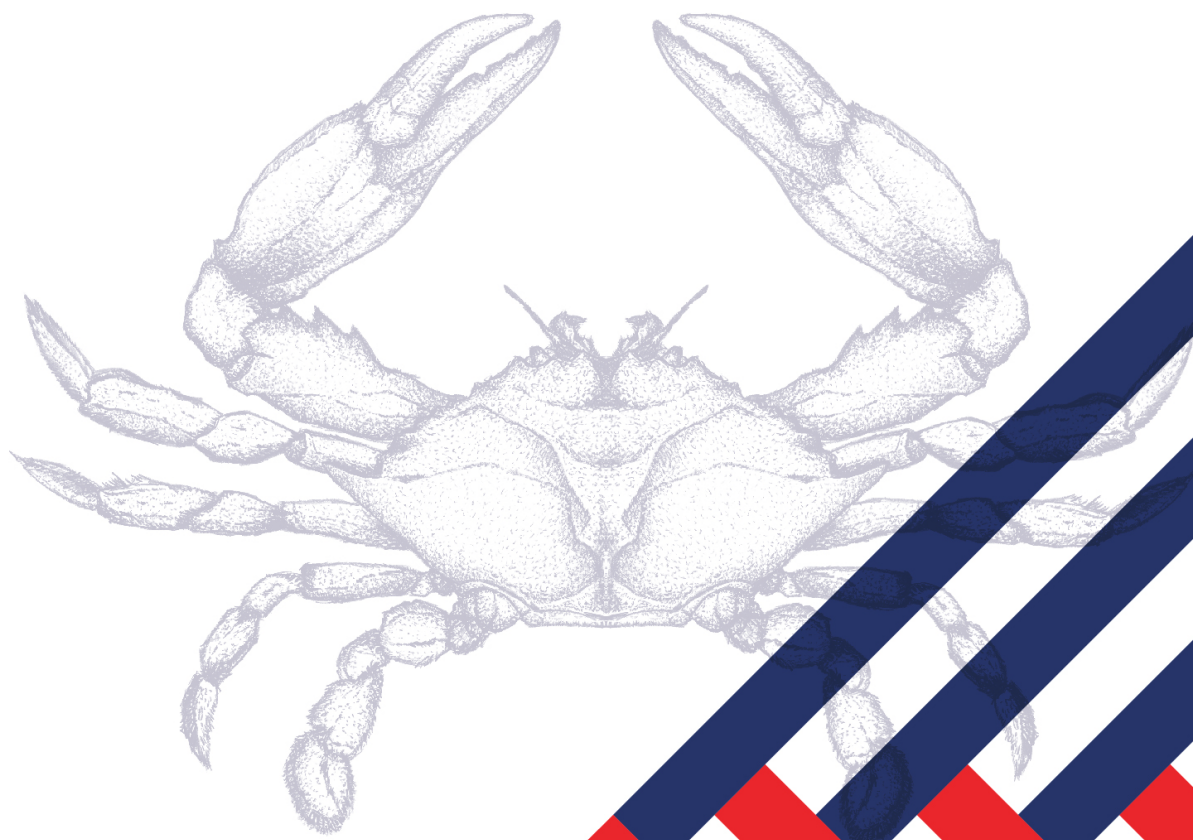


# Marina Gourmet

PRODUCT CATALOG



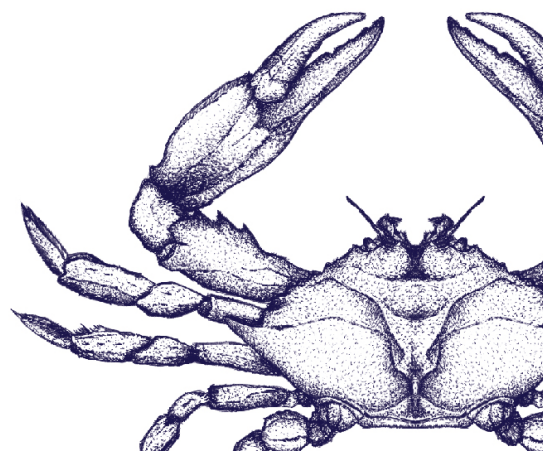
# Marina Gourmet

is a brand of MexiFood, a family-owned seafood company, specialized in All-Natural products from the Sea of Cortez. We have been exporting to the U.S. since 1978.

In Marina Gourmet, we pride ourselves in offering the best-tasting, highest-quality seafood in the market; we aim to satisfy the most exclusive markets.

## All of our products are:

- From steamed live crabs
- Sweet tasting, velvety-textured premium meat.
- Year-round production
- 100% Natural (No chemicals or added-salt)
- Wild-caught
- Carefully hand-picked
- Black-Light inspected for shells
- Pasteurized naturally
- In compliment with standards and regulations (Including FDA and HACCP).





# PRODUCTS

All presentations are  
16 oz. (454g) metal cans or 8oz. (226g), (Unless specified otherwise)



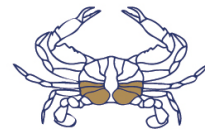
## COLOSAL LUMP

Colossal and jumbo lump consist of the two large muscles connected to the swimming fins of the crab; colossal simply comes from larger crabs than jumbo lump.



## SUPER LUMP

Pieces of body meat made up of broken Colossal.



## LUMP

Pieces of body meat made up of broken Jumbo.

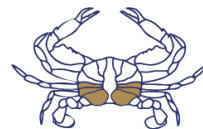






## BACKFIN

A layered combination of special meat and lump.



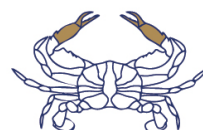
## SPECIAL

Made up of pieces of backfin and white body meat. Often considered the most versatile grade for the widest range of recipes.



## COCKTAIL CLAW FINGERS

The last segment of the claw in which the shell has been completely removed, except for the tip, which may serve as handle for dipping meat in cocktail sauce or melted butter.







## CLAW

Presentation: 16oz Can (454g)  
Pieces of Claw and leg meat.



## MINCED CRAB MEAT

A premium, creamy-textured paste, made 100% from Blue Crab Meat. Multi-purposeful, ideal for crab cakes and chowders.



## WILD SHRIMP

Fresh, wild-caught shrimp. Carefully selected, pre-cooked, beheaded and ready to eat.  
Available sizes: 8oz (227kg), 16oz (454g).





## MexiFood SA de CV

Carretera Libre Mexico Nogales Km 37, Gabriel Leyva  
Solano, Guasave, Sinaloa, Mexico, ZIP Code: 81122

## Work Program

All year production, with production peaks from May to November.  
Production of approximately 2 million cans.  
Annual staff turnover of 400 to 3,000 people.  
Strong job creator in the area.

### Brands and Presentations

Marina Gourmet Bistro (USA)  
Fine Catch Bistro (Mexico)

### Distribution Centers in the U.S.

Houston, TX  
Nogales, AZ  
Los Angeles, CA

### Contact Us

[contact@mexifood.info](mailto:contact@mexifood.info)  
[alfonsojr@mexifoodco.com](mailto:alfonsojr@mexifoodco.com)  
[Alejandra@mexifoodco.com](mailto:Alejandra@mexifoodco.com)

### Phone Numbers

USA: 8183180114  
Mexico: +52 6878772712